



Claims data tells you what happened to your members 30 to 90 days ago. Clinical data tells you what's happening to them right now. In value-based care, using both together is no longer optional, yet most organizations struggle to combine them. Clinical data is often fragmented across electronic health records (EHRs), laboratory systems, and ADT (admission, discharge, transfer) feeds. It varies in structure, completeness, and refresh frequency, making it difficult to analyze consistently at scale, especially for organizations with limited data resources.

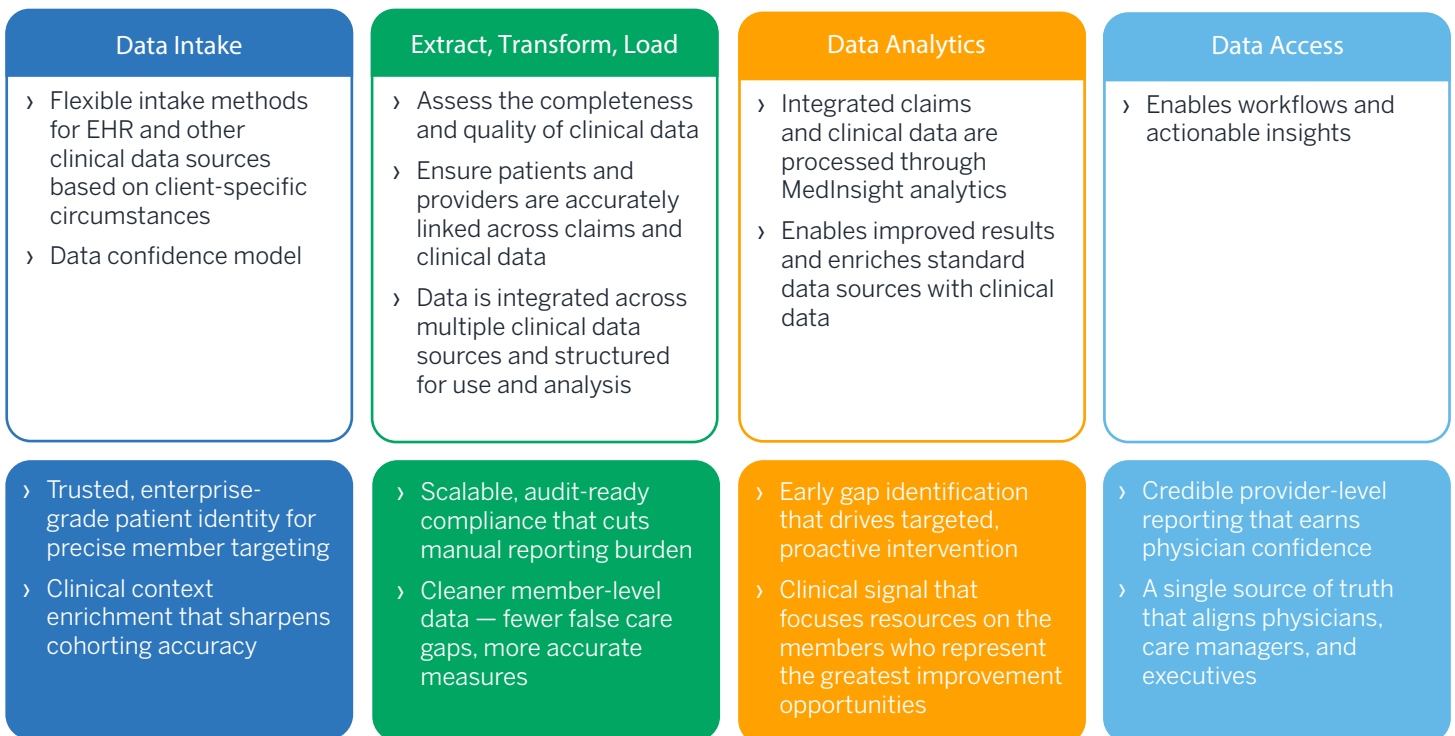
Milliman MedInsight closes the gap with an analytics-first approach designed for data accuracy, consistency, and interoperability. Using the MedInsight Data Confidence Model, clinical data is standardized, validated, and linked with claims before it's used for analytics. Backed by specialized tools and Milliman's deep healthcare data expertise, the result is an analytics-ready environment for more meaningful analysis and informed decision-making.

Why is clinical data integration critical?

Claims data provides valuable historical insight into utilization and cost, but it often lags and lacks the clinical detail needed for timely analysis. This can make clinically important gaps in care less visible, limiting an organization's ability to identify and address them effectively.

Clinical data adds richer context around patient conditions, care delivery, and outcomes, enabling organizations to surface clinically meaningful opportunities for improvement that drive real health impact. When integrated with claims and operational data, clinical data delivers a more unified and accurate view of both financial performance and quality outcomes, balancing cost insights with clinical reality to support population health, quality improvement, and performance measurement initiatives.

MedInsight clinical data integration



Benefits of clinical data integration



Richer population insight

Combine clinical, claims, and operational data to support more complete population views and better understand utilization patterns, care delivery, and outcomes.



Earlier clinical signals

Clinical data provides timelier insight than claims alone, enabling organizations to identify trends, performance issues, and emerging risks sooner.



Stronger population analytics

Incorporating labs, vitals, medications, diagnoses, and encounters improves population identification, risk stratification, quality measurement, and care gap analysis.



Trusted clinical data

The MedInsight Data Confidence Model validates clinical data for completeness, consistency, quality, and patient matching before analytics.



Analytics-first integration

Clinical data integration supports analytics and performance measurement while complementing existing EHR systems, not replacing transactional clinical workflows.

Use cases: How clinical data can help



Strengthen quality measurement and reporting

Supplement claims with clinical data to improve measure accuracy, close care gaps, and simplify hybrid and regulatory reporting.



Near-real-time performance improvement

Close the 30 to 90 day claims lag with timely clinical data, helping teams spot bottlenecks, track outcomes, and intervene before issues compound.



Enhanced population identification

Combine clinical and claims data to pinpoint high-risk cohorts, chronic conditions, and rising-risk members earlier in their care journey.



Reduce total cost of care

Pinpoint patient needs at every stage of the healthcare journey to deploy resources efficiently, reduce unnecessary utilization, and drive down overall cost.



Operational efficiency and resource planning

Optimize staffing, capacity, and workflow using integrated patient data and predictive analytics to direct resources where they'll have the greatest impact.

Get started today

Find out how your organization can utilize EHR / clinical data to deliver on the promise of value-based care and population health. To learn more, contact us at info@medinsight.com.

Current MedInsight customers should contact their MedInsight account executive.

[medinsight.com](https://www.medinsight.com)

Milliman MedInsight

